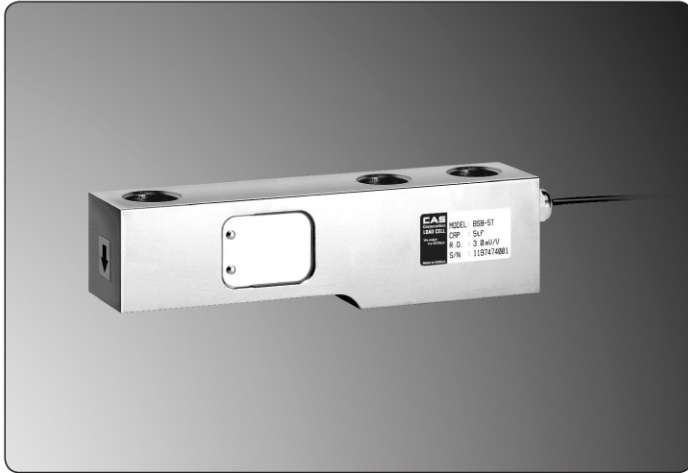
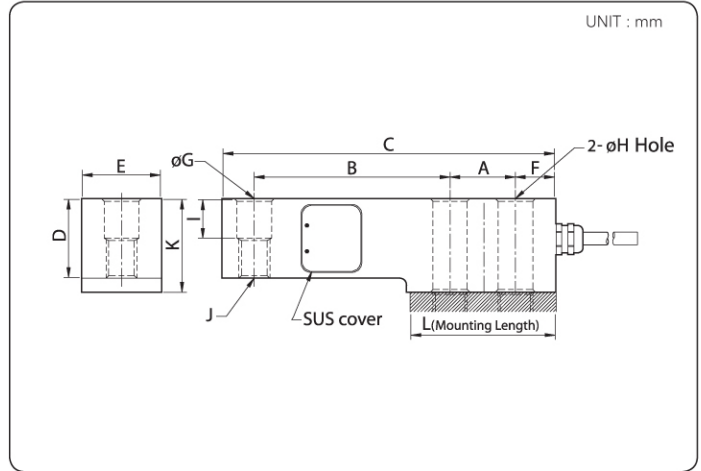




### LOAD CELL



### DIMENSION



### FEATURES

- Protection Class IP66
- Mechanical protection with SUS cover
- Integral mounting space

### ACCESSORY OPTION

- Bolt type\_TW (Low : 250~2K, High : 3K~5K)
- Ball & Safety guide bar type\_TW (Low : 250~2K, High : 3K~5K)

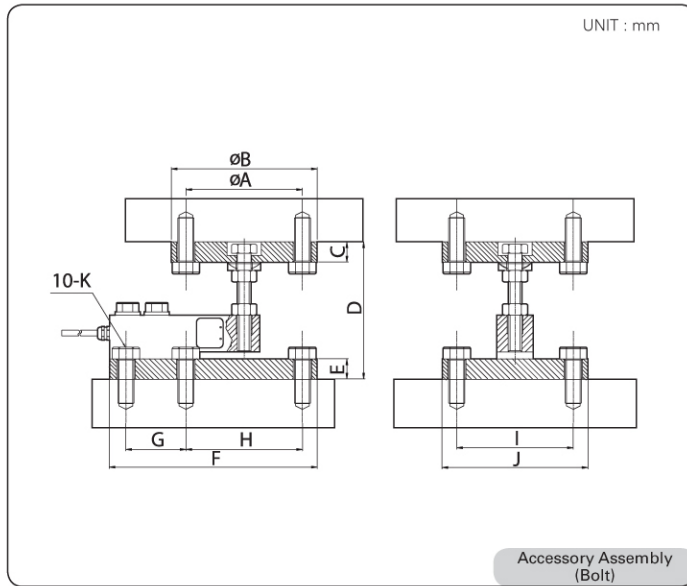
Capa.	A	B	C	D	E	F	G	H	I	J	K	L
250												
500												
1K	25.4	76.2	131	32	31.8	16.7	13.5	13.5	16	M12 X 1.75	38	57
2K												
3K	38.1	95.3	172.5	38	38	20	20	20	19	M18 X 1.5	44.5	76
5K												
10K	50.8	120.7	223.3	50.8	50.8	26.4	26.2	26.2	25.4	M24 X 2.0	57.2	101

### SPECIFICATION

Max. Capacity (Rated Load)	kgf	250, 500, 1K, 2K, 3K, 5K, 10K
Rated Output	mV/V	3.0 ± 0.0075
Zero Balance	mV/V	0.0 ± 0.030
Accuracy Class	-	-
Non-Linearity	% R.O.	0.03
Hysteresis	% R.O.	0.03
Combined Error	% R.O.	0.03
Repeatability	% R.O.	0.01
Creep for 30min.	% R.O.	0.03
Return for 30min.	% R.O.	0.03
Resolution	-	≤ 1/3000
Division	mV/V	0.001
Temperature Effect on	-	-
_Zero Value	% / 10°C	0.028
_Output Value	% / 10°C	0.015
Excitation	-	-
_Recommended	V	10
_Maximum	V	15
Resistance	-	-
_Input	Ω	350 ± 3.5
_Output	Ω	350 ± 3.5
_Insulation	MΩ	>2000
Compensated Temperature Range	°C	-10 to +40
Operating Temperature Range	°C	-30 to +80
Material & Plate	-	Nikel Plated Steel
Cable Specification	-	ø5.4 x 4p x5M (Urethane-Jacket)
Safety Overload	% R.L.	150%R.L.
Platform Size	mm	4-Point Platform Type



### ● DIMENSION



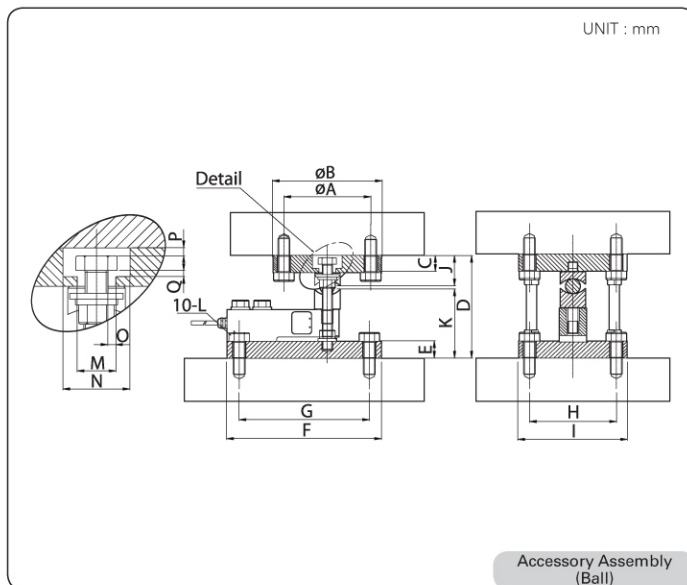
### ● ACCESSORY FEATURES

- Loading bolt type
- Safety structure

### ● MANUAL

- Base, Load Cell, Loading Bolt, Upper are assembled in sequence
- While installing the loadcell the surface level should be checked
- CAUTION : The Loading Bolt has to be under the Upper Plate

Capa.	A	B	C	D	E	F	G	H	I	J	K
250											
1K	102	127	178	114.8 ~ 119.8	178	180.9	52.3	101.6	101.6	127	M16
2K											
3K	102	127	23.9	135.9 ~ 143.9	23.9	215.9	82.5	101.6	101.6	127	M16
5K											



### ● ACCESSORY FEATURES

- Ball type
- High resolution
- Easy replacement

### ● MANUAL

- Rise the Upper Plate by using the supporters at both sides and join it with the Base Plate
- Untie the upper bolt of the supporter and place the Upper ball cup over the steel Ball
- Check the level of the load cell

Capa.	A	B	C	D	E	F	G	H	I	J	K	L	M	N	O	P	Q
250																	
1K	102	127	20	120	20	180.9	152.3	102	127	35	80	M16	20	40	4	2.8	4.6
2K																	
3K	102	127	26	150	24	215.9	184.1	102	127	45	89.5	M16	28	46	5	2.5	4.5
5K																	