

BSS Stainless shear beam load cell



LOAD CELL



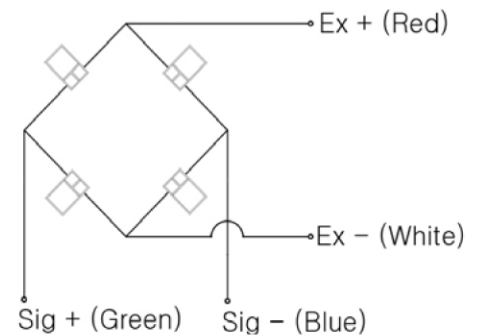
FEATURES

- ◆ OIML C3 approved (OIML R60)
- ◆ Option : Ex ia II C T5 approved
- ◆ Protection class IP67

ACCESSORY OPTION

- ◆ Loading Bolt Type Accessory
- ◆ Ballcup Type Accessory

CABLE COLOR CODE

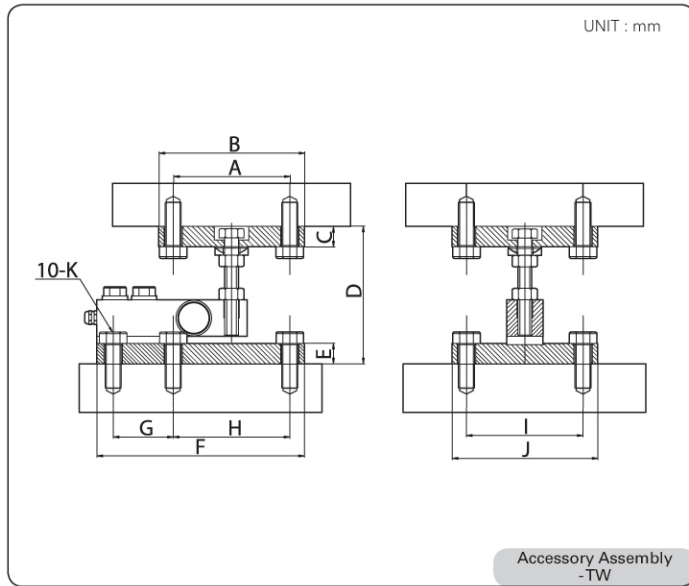


SPECIFICATION

Max. Capacity (Rated Load)	kg	500, 1K, 2K, 3K, 5K	
Rated Output	mV/V	2.0 ± 0.005	
Zero Balance	mV/V	0 ± 0.02	
Accuracy Class		D3	C3
Non-Linearity	% R.O.	0.03	0.025
Hysteresis	% R.O.	0.03	0.025
Combined Error	% R.O.	0.03	0.025
Repeatability	% R.O.	0.01	0.01
Creep for 30min.	% R.O.	0.03	0.017
Return for 30min.	% R.O.	0.03	0.017
Resolution		<1/3000	<1/4000
Division	mV/V	0.0067	0.005
Temperature Effect on Zero Value	%/10°C	0.028	
Output Value	%/10°C	0.015	
Excitation			
Recommended	V	10	
Maximum	V	15	
Resistance			
Input	Ω	350±3.5	
Output	Ω	350±3.5	
Insulation	MΩ	> 2000	
Compensated Temperature Range	°C	-10 to +40	
Operating Temperature Range	°C	-30 to +80	
Material & Plate		Stainless steel	
Cable Specification		Φ5.4 × 4P × 5m (Urethan)	
Safety Overload	% R.L.	150 R.L	
Platform Size	mm	Without Limit	



● DIMENSION



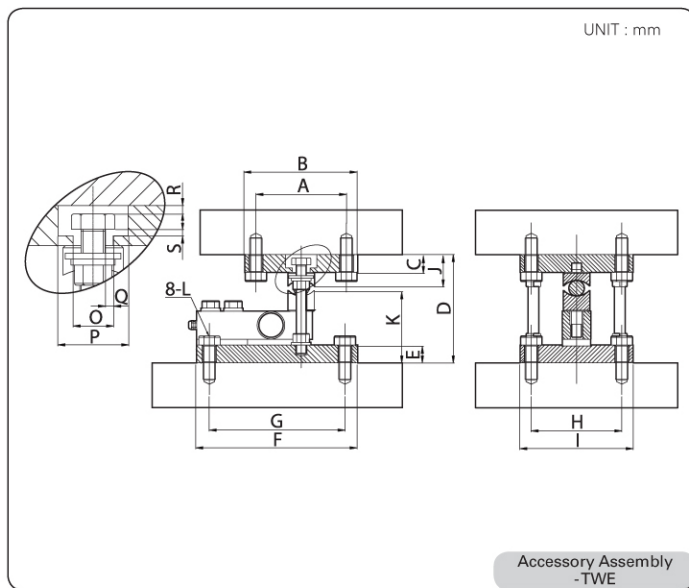
● ACCESSORY FEATURES

- Loading bolt type
- Safety structure

● MANUAL

- Base, Load Cell, Loading Bolt, Upper are assembled in sequence
- While installing the loadcell the surface level should be checked
- CAUTION : The Loading Bolt has to be under the Upper Plate

Capa.	A	B	C	D	E	F	G	H	I	J	K
500	101.6	127	178	115.9-123.9	178	180.9	52.3	101.6	101.6	127	M16
1K											
2K											
3K	101.6	127	23.9	136~144	23.9	215.9	82.5	101.6	101.6	127	M16
5K											



● ACCESSORY FEATURES

- Ball type
- High resolution
- Easy replacement

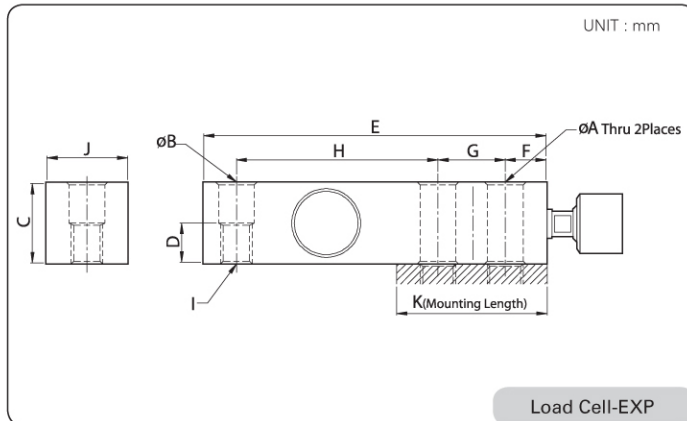
● MANUAL

- Rise the Upper Plate by using the supporters at both sides and join it with the Base Plate
- Untie the upper bolt of the supporter and place the Upper ball cup over the steel Ball
- Check the level of the load cell

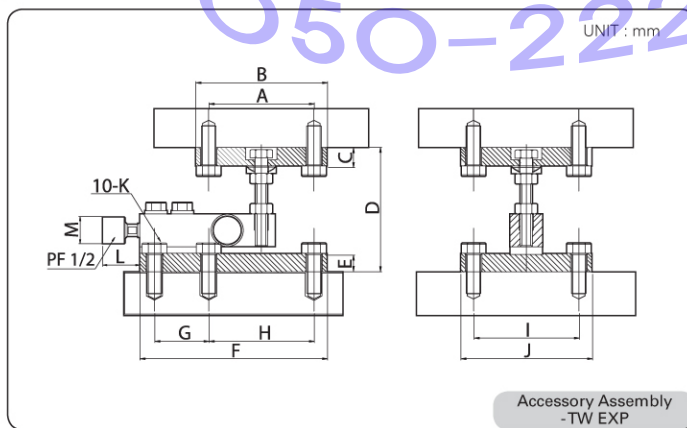
Capa.	A	B	C	D	E	F	G	H	I	J	K	L	M	N	O	P	Q
500	102	127	20	122	20	180.9	152.3	102	127	35	81.1	M16	20	40	4	3.8	3.2
1K																	
2K																	
3K	102	127	26	154	24	215.9	184.1	102	127	45	94.3	M16	28	46	5	3.6	3.4
5K																	



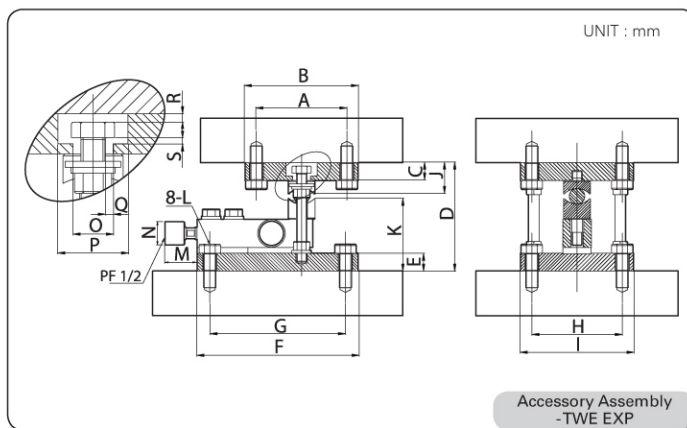
DIMENSION



Capa.	A	B	C	D	E	F	G	H	I	J	K
500											
1K	13.5	13.5	31.7	15.8	130	15.8	25.4	76.2	M12 X 1.75	31.7	52
2K											
3K	20	20	38.1	19.1	171.5	19	38.1	95.3	M18 X 1.5	38.1	76.2
5K											



Capa.	A	B	C	D	E	F	G	H	I	J	K	L	M
500													
1K	101.6	127	178	115.9~123.9	178	180.9	52.3	101.6	101.6	127	M16	36	26
2K													
3K	101.6	127	23.9	136~144	23.9	215.9	82.5	101.6	101.6	127	M16	36	26
5K													



Capa.	A	B	C	D	E	F	G	H	I	J	K	L	M	N	O	P	Q	R	S
500																			
1K	102	127	20	122	20	181	152	102	127	35	81.1	M16	36	26	20	40	4	3.8	3.2
2K																			
3K	102	127	26	154	24	216	184	102	127	45	94.3	M16	36	26	28	46	5	3.6	3.4
5K																			

ACCESSORY FEATURES

- Loading bolt type
- Safety structure

MANUAL

- Base, Load Cell, Loading Bolt, Upper are assembled in sequence
- While installing the loadcell the surface level should be checked
- CAUTION : The Loading Bolt has to be under the Upper Plate

ACCESSORY FEATURES

- Ball type
- High resolution
- Easy replacement

MANUAL

- Rise the Upper Plate by using the supporters at both sides and join it with the Base Plate
- Untie the upper bolt of the supporter and place the Upper ball cup over the steel Ball
- Check the level of the load cell