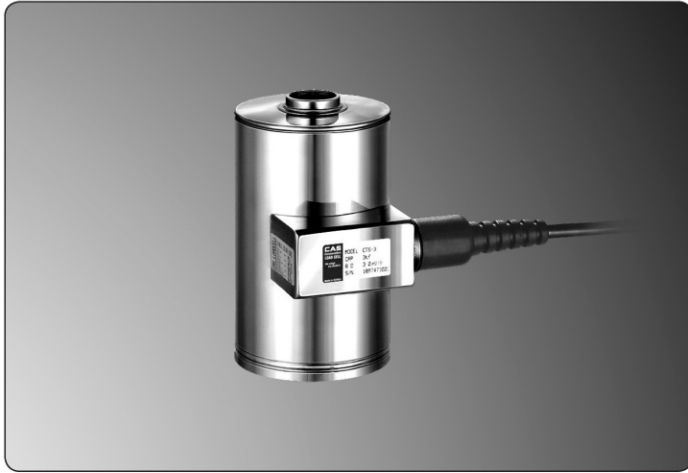
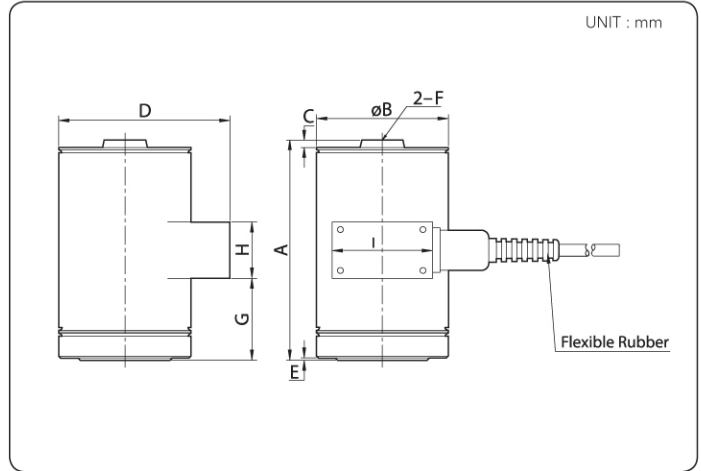




LOAD CELL



DIMENSION



FEATURES

- Tension and compression load cell
- Hermetically sealed
- Stainless steel construction
- High accuracy grade
- Option : Exia IIC T6

ACCESSORY OPTION

- Rod End (200~1K : M12 x 1.25)
- Rod End (2K~5K : M24 x 2.0)

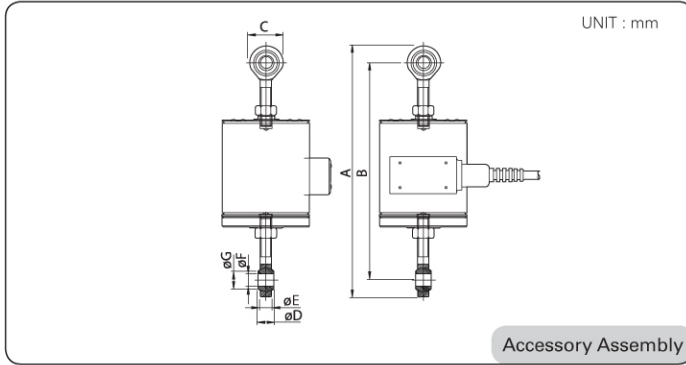
Capa.	A	B	C	D	E	F	G	H	Cable(m)
200									
300									
500	115	89	5	115	1.5	M12 X 1.25	35	38	5
1K									
2K									
3K	148	89	9	115	1	M24 X 2.0	55	38	5
5K									

SPECIFICATION

Max. Capacity (Rated Load)	kgf	200, 300, 500, 1K, 2K, 3K, 5K
Rated Output	mV / V	3.0 ± 0.003
Zero Balance	mV / V	0.0 ± 0.03
Accuracy Class	-	A B
Non-Linearity	% R.O.	0.02 0.05
Hysteresis	% R.O.	0.02 0.05
Combined Error	% R.O.	0.02 0.05
Repeatability	% R.O.	0.01 0.02
Creep for 30min.	% R.O.	0.03 0.03
Return for 30min.	% R.O.	0.03 0.03
Resolution	-	≤1/5000 ≤1/2000
Division	mV / V	0.0006 0.0015
Temperature Effect on	-	- -
_Zero Value	% / 10°C	0.03 0.03
_Output Value	% / 10°C	0.03 0.03
Excitation	-	-
_Recommended	V	10
_Maximum	V	15
Resistance	-	-
_Input	Ω	350 ± 3.5
_Output	Ω	350 ± 3.5
_Insulation	MΩ	>2000
Compensated Temperature Range	°C	-10 to +40
Operating Temperature Range	°C	-30 to +80
Material & Plate	-	Stainless steel, Buffing
Cable Specification	-	ø8 x 4p x 5M (Urethane - Jacket, EXP:Gray)
Safety Overload	% R.L.	150% R.L.
Platform Size	mm	No Platform Type



● DIMENSION



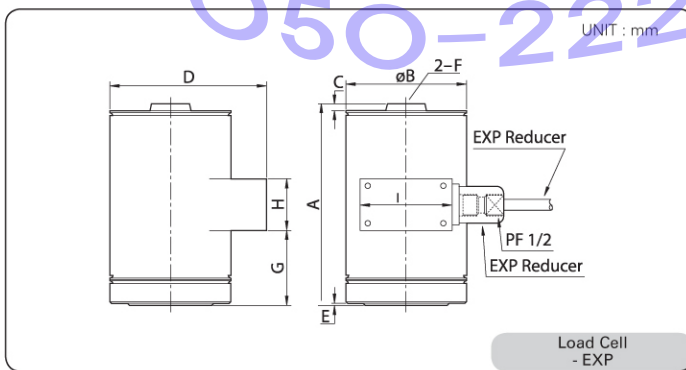
● ACCESSORY FEATURES

- Bearing included structure
- CAS specification

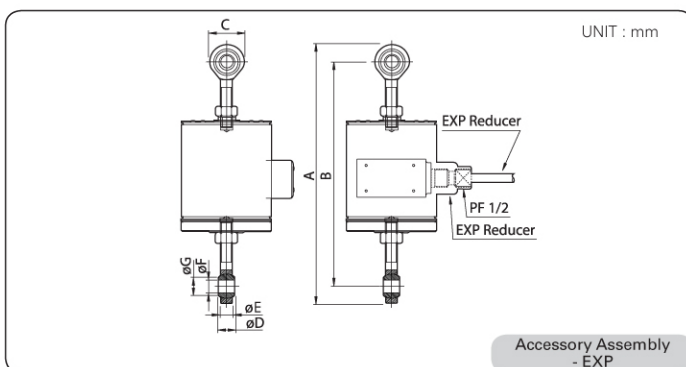
● MANUAL

- Install the Rod End on the upper and bottom side of the Load Cell
- Do not insert the Rod End until the end
- The Rod End should be in a perpendicular with the force direction of the Load Cell
- CAS original Rod End is recommended for the application

Capa.	A	B	C	D	E	øF	øG
200	255.0 ~ 260.0	221.0 ~ 226.0	34.0	16.0	12.0	12.0	15.4
300							
500							
1K	526.0 ~ 531.0	424.0 ~ 429.0	102.0	28.0	27.0	22.0	25.8
2K							
3K							
5K							



Capa.	A	B	C	D	E	F	G	H	Cable(m)
200	115	89	5	115	1.5	M12 X 1.25	35	38	5
300									
500									
1K	148	89	9	115	1	M24 X 2.0	55	38	5
2K									
3K									
5K									



● ACCESSORY FEATURES

- Bearing included structure
- CAS specification

● MANUAL

- Install the Rod End on the upper and bottom side of the Load Cell
- Do not insert the Rod End until the end
- The Rod End should be in a perpendicular with the force direction of the Load Cell
- CAS original Rod End is recommended for the application

Capa.	A	B	C	D	E	øF	øG
200	255.0 ~ 260.0	221.0 ~ 226.0	34.0	16.0	12.0	12.0	15.4
300							
500							
1K	526.0 ~ 531.0	424.0 ~ 429.0	102.0	28.0	27.0	22.0	25.8
2K							
3K							
5K							