

LSW

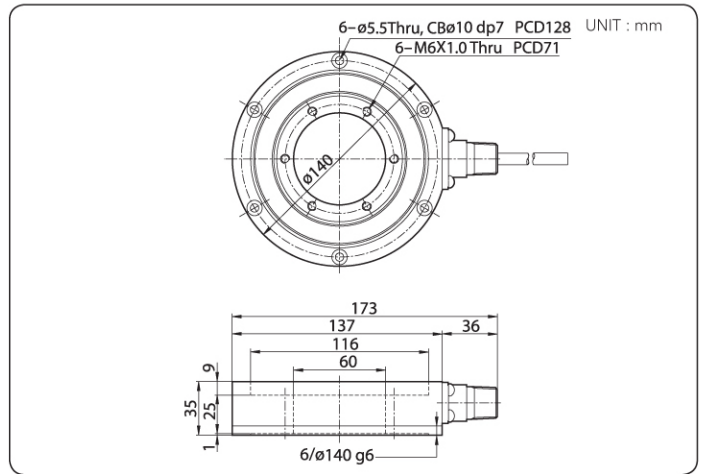
Low Profile Center Hole



● LOAD CELL



● DIMENSION



● FEATURES

- Center hole compression load cell
- Low profile

050-2222-9933

● SPECIFICATION

Max. Capacity (Rated Load)	tf	1, 2, 3
Rated Output	mV/V	1.0 \pm 0.05
Zero Balance	mV/V	0.0 \pm 0.015
Accuracy Class	-	-
Non-Linearity	% R.O.	0.5
Hysteresis	% R.O.	0.5
Combined Error	% R.O.	0.5
Repeatability	% R.O.	-
Creep for 30min.	% R.O.	0.03
Return for 30min.	% R.O.	0.03
Resolution	-	<1/200
Division	mV/V	0.005
Temperature Effect on	-	-
_Zero Value	% / 10 $^{\circ}$ C	0.05
_Output Value	% / 10 $^{\circ}$ C	0.05
Excitation	-	-
_Recommended	V	10
_Maximum	V	15
Resistance	-	-
_Input	Ω	350 \pm 3.5
_Output	Ω	350 \pm 3.5
_Insulation	M Ω	>2000
Compensated Temperature Range	$^{\circ}$ C	-10 to +40
Operating Temperature Range	$^{\circ}$ C	-20 to +80
Material & Plate	-	Steel
Cable Specification	-	ϕ 8.0 x 4p x 10M
Safety Overload	% L.	150%L.
Platform Size	mm	No Platform Type