

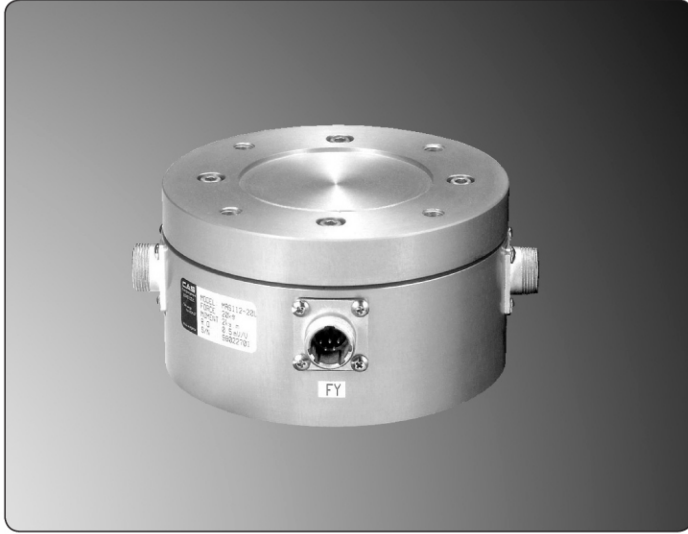
MAS

Multi-axis Load Cell (2axis, 3axis)



One

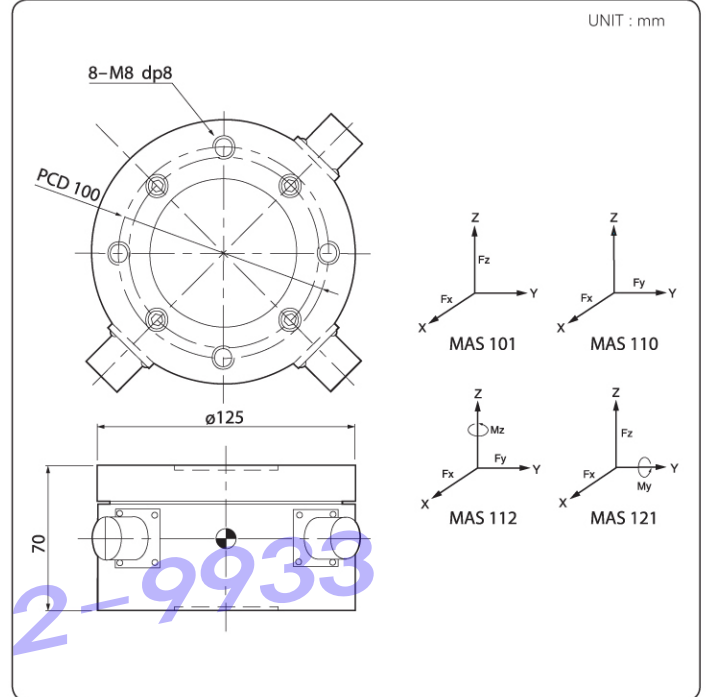
LOAD CELL



FEATURES

- Various capacity of detecting up to 6 components
- Minimise interaction between components
- High accuracy less than 0.5% on each components
- All products patent pending
- Order made (capacity, size)

DIMENSION



Type		Rated Load (Allowable Moment)						
		Fx (kg)	Fy (kg)	Fz (kg)	Mx (kg x m)	My (kg x m)	Mz (kg x m)	
2AXIS	MAS101	2L	2	(5)	2	(0.5)	(0.3)	(0.3)
		5L	5	(12.5)	5	(1.25)	(0.75)	(0.75)
		10L	10	(25)	10	(2.5)	(1.5)	(1.5)
		20L	20	(50)	20	(5)	(3)	(3)
		50L	50	(80)	50	(8)	(7.5)	(7.5)
	MAS110	2L	2	(5)	2	(0.5)	(0.5)	(0.3)
		5L	5	(12.5)	5	(1.25)	(1.25)	(0.75)
		10L	10	(25)	10	(2.5)	(2.5)	(1.5)
		20L	20	(50)	20	(5)	(5)	(3)
		50L	50	(80)	50	(8)	(8)	(7.5)

Type		Rated Load (Allowable Moment)						
		Fx (kg)	Fy (kg)	Fz (kg)	Mx (kg x m)	My (kg x m)	Mz (kg x m)	
3AXIS	MAS112	2L	2	2	(5)	(0.5)	(0.5)	0.2
		5L	5	5	(12.5)	(1.25)	(1.25)	0.5
		10L	10	10	(25)	(2.5)	(2.5)	1
		20L	20	20	(50)	(5)	(5)	2
		50L	50	50	(80)	(8)	(8)	5
	MAS121	2L	2	(5)	2	(0.5)	0.2	(0.3)
		5L	5	(12.5)	5	(1.25)	0.5	(0.75)
		10L	10	(25)	10	(2.5)	1	(1.5)
		20L	20	(50)	20	(5)	2	(3)
		50L	50	(80)	50	(8)	5	(7.5)

SPECIFICATION

Max. Capacity (Rated Load)	kgf	2, 5, 10, 20, 50
Rated Output	mV/V	0.5 ± 0.005
Zero Balance	mV/V	0.0 ± 0.02
Accuracy Class	-	-
Non-Linearity	% R.O.	0.5% FS for each component force
Hysteresis	% R.O.	0.5% FS for each component force
Combined Error	% R.O.	0.5% FS for each component force
Temperature Effect on	-	-
_Zero Value	% / 10°C	± 0.01% FS/°C for each component force
_Output Value	% / 10°C	± 0.06% FS/°C for each component force
Excitation	-	-
_Recommended	V	10
_Maximum	V	15
Resistance	-	-
_Input	Ω	350 ± 3.5
_Output	Ω	350 ± 3.5
_Insulation	MΩ	>2000
Material & Plate	-	Anodized Aluminum
Cable Specification	-	ø5.4 x 4p x 5.12M (Urethane - Jacket)
Safety Overload	% R.L.	150% FS for each component force