

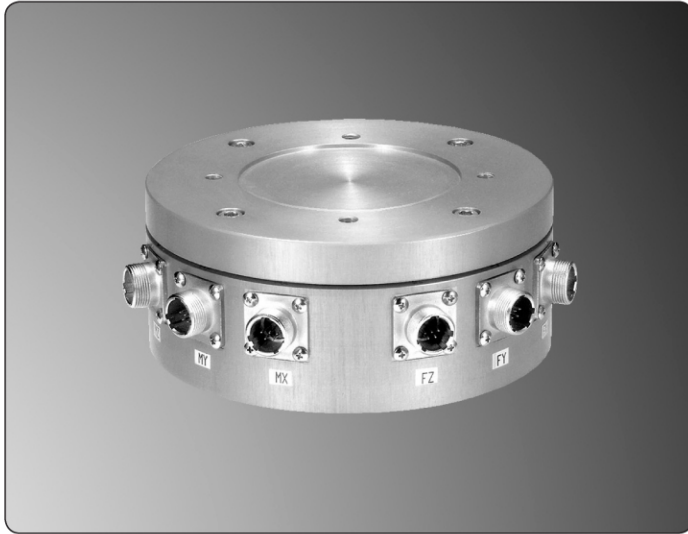
MAS

Multi-axis Load Cell (5axis, 6axis)

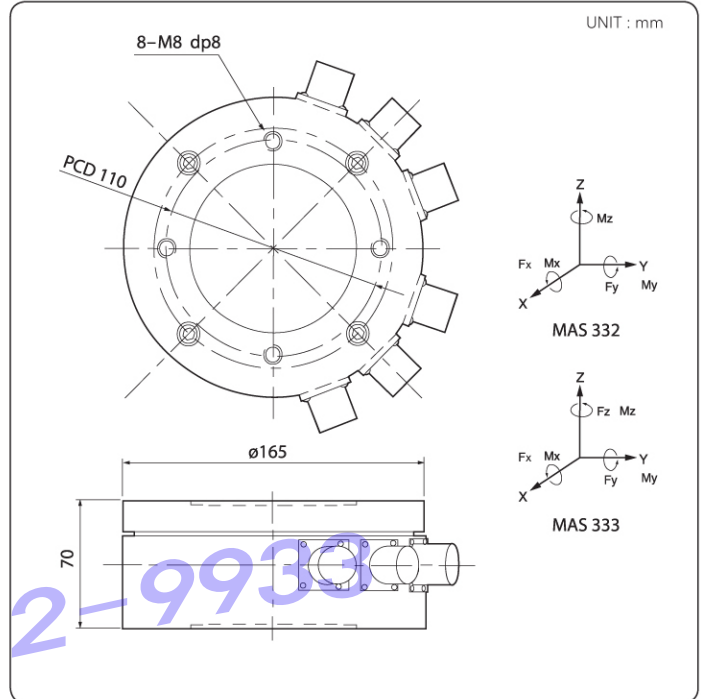


One

LOAD CELL



DIMENSION



FEATURES

- Various capacity of detecting up 6 components
- Minimise interaction between components
- High accuracy less than 0.5% on each components
- All products patent pending
- Order made (capacity, size)

Type		Rated Load (Allowable Moment)						
		Fx (kg)	Fy (kg)	Fz (kg)	Mx (kg x m)	My (kg x m)	Mz (kg x m)	
5AXIS	MAS332	2L	2	2	(3)	0.2	0.2	0.2
		5L	5	5	(7.5)	0.5	0.5	0.5
		10L	10	10	(15)	1	1	1
		20L	20	20	(30)	2	2	2
		50L	50	50	(75)	5	5	5

Type		Rated Load (Allowable Moment)						
		Fx (kg)	Fy (kg)	Fz (kg)	Mx (kg x m)	My (kg x m)	Mz (kg x m)	
6AXIS	MAS333	2L	2	2	2	0.2	0.2	0.2
		5L	5	5	5	0.5	0.5	0.5
		10L	10	10	10	1	1	1
		20L	20	20	20	2	2	2
		50L	50	50	50	5	5	5

SPECIFICATION

Max. Capacity (Rated Load)	kgf	2, 5, 10, 20, 50
Rated Output	mV / V	0.5 ± 0.005
Zero Balance	mV / V	0.0 ± 0.02
Accuracy Class	-	-
Non-Linearity	% R.O.	0.5% FS for each component force
Hysteresis	% R.O.	0.5% FS for each component force
Combined Error	% R.O.	0.5% FS for each component force
Temperature Effect on	-	-
_Zero Value	% / 10°C	± 0.01% FS/°C for each component force
_Output Value	% / 10°C	± 0.06% FS/°C for each component force
Excitation	-	-
_Recommended	V	10
_Maximum	V	15
Resistance	-	-
_Input	Ω	350 ± 3.5
_Output	Ω	350 ± 3.5
_Insulation	MΩ	>2000
Material & Plate	-	Anodized Aluminum
Cable Specification	-	∅5.4 x 4p x 5.12M (Urethane - Jacket)
Safety Overload	% R.L.	150% FS for each component force