

FEATURES

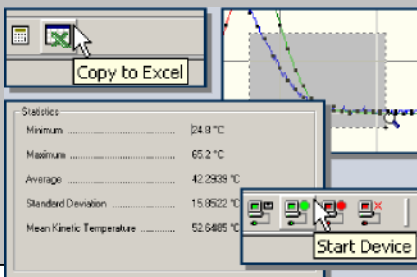
- Extended temperature range
- Rugged
- Reusable
- Submersible
- Programmable start time
- Real-time operation
- N.I.S.T. traceable
- User-friendly
- Low cost

APPLICATIONS

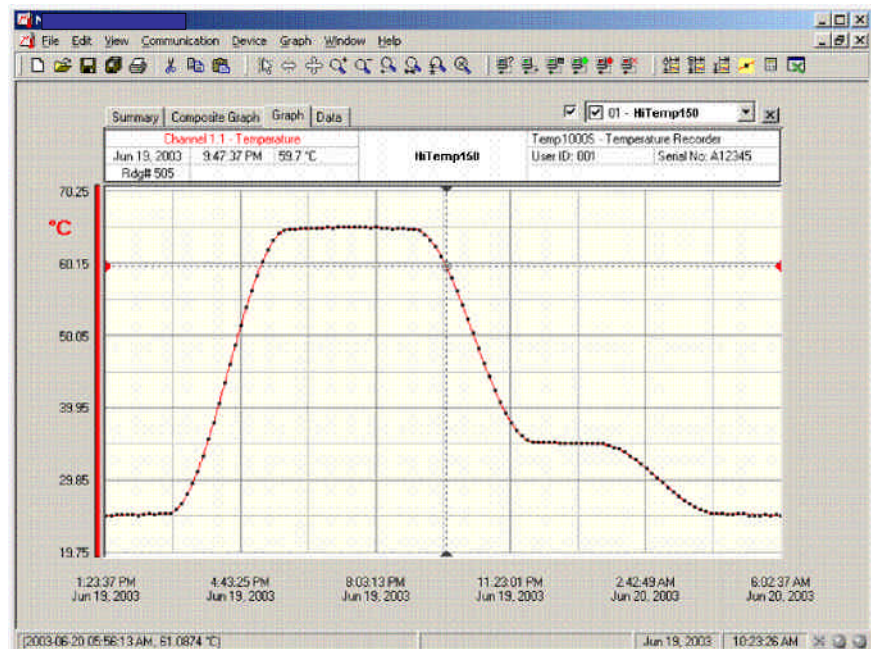
- Autoclave Verification
- Medical/Pharmaceutical
- Implement HACCP Programs - Food preparation and processing
- Environmental studies
- Well monitoring
- Dish washer testing
- Hostile environment monitoring

SOFTWARE

Monarch's Data Recorder Software is an easy to use Windows-based software package that allows the user to effortlessly collect, display and analyzes data. A variety of powerful tools allow you to examine, export, and print professional looking data with just a click of the mouse.



The HiTemp150 temperature logger is a rugged, submersible, battery powered, stand alone device which can be used to automatically record temperatures between -40 and 150°C. This all in one compact, portable, easy to use device is able to measure and record up to 32,767 temperature measurements. The HiTemp150 features a 1" rigid external probe* with fast response time to ensure accurate temperature readings and is ideal for use in harsh environments. Its real time clock ensures that all the data is time and date stamped. The storage medium is non-volatile solid state memory, providing maximum data security even if the battery becomes discharged. The device can be started and stopped directly from your computer and its small size allows it to fit almost anywhere. The HiTemp150 makes data retrieval quick and easy. Simply plug the device into an empty COM/USB port and our user-friendly software does the rest.



HITEMP150 SPECIFICATIONS

Temperature Sensor: 100~ Platinum RTD

Power: 3.9V high-temperature lithium battery included

Temperature Range: -40 to +150°C

Battery Life: 1 year typical (1 minute reading rate @ 25°C)

Temperature Resolution: 0.05°C

Data Format: Date and time stamped °C, °F, °K, °R

Resolution:

Calibrated Accuracy: ±0.5°C

Time Accuracy: ±1 minute/month at 20°C (RS232 cable not in use)

Specified Accuracy Range: 100°C span between calibration points

Computer Interface: PC serial or USB (Interface cable required); 2,400 baud

Start Time: Software programmable start time and date, up to six months in advance

Software: Windows 95/98/ME/NT/2000/XP based software

Real Time Recording: May be used with PC to monitor and record data in real time

Operating Environment: -40 to +150°C, 0 to 100%RH

Memory: 32,767 readings

Dimensions (Body): 1.1" x 1.75" dia. (122mm x 26mm dia.)

Reading Interval: 1 reading every 2 seconds to 1 every 12 hours

***Dimensions (Probe):** 1.0" x 3/16" dia. (26mm x 5mm dia.)

Calibration: Digital calibration through software

Weight: 8 oz (225 g)

Calibration Date: Automatically recorded within device

*Longer probe lengths available upon request.

WARNING: FIRE, EXPLOSION, AND SEVERE BURN HAZARD. DO NOT SHORT CIRCUIT, CHARGE, FORCE OVERDISCHARGE, DISASSEMBLE, CRUSH, PENETRATE OR INCINERATE. BATTERY MAY LEAK OR EXPLODE IF HEATED ABOVE 150° C (302° F).

HITEMP150 SOFTWARE FEATURES

Multiple Graphs: Simultaneously analyze data from several units or deployments; easily switch to a single data series

Statistics: Calculate averages, min, max, standard deviation, and mean kinetic temperature with the touch of a button

Real-Time Recording: Collect and display data in real-time while continuing to log.

Export Data: Export data in a variety of common formats, or switch to Excel® with a single click

Graphical Cursor: One click displays readings by time, value, parameter or sample number

Calibration: Automatically calculate and store calibration parameters.

Data Table: Instantly access tabular view for detailed dates, times, values, and annotations

Logger Configuration: Easy set up and launch of data loggers with immediate or delayed start, preferred sample rate, and device ID

Scaling Options: Autoscale function fits data to the screen, or allows user to manually enter their own values

Communications: Automatically sets up communications port, or lets user select configuration

Formatting Options: Change colors, line styles, plotting options, show or hide channels in an instant

Printing: Automatically print graphical or tabular data

ORDERING INFORMATION

Model	Description	Price
HiTemp150	Extended Range Temperature Recorder	\$499.00
IFC110	Software, manual and serial interface cable	\$99.00
IFC200	Software, manual and USB interface cable	\$119.00
N IST	N.I.S.T. Calibration Certificate	Call for Price
3B5700	Replacement battery for HiTemp150	\$99.00

PRICES AND SPECIFICATIONS SUBJECT TO CHANGE WITHOUT NOTICE.

ASK ABOUT OUR OTHER DATA RECORDERS

Temperature	pH
Humidity	Level
Pressure	Shock/Vibration
Bridge/Strain	Submersible
Current	Pulse/Event
Voltage	Multi-parameter



MONARCH INSTRUMENT

15 Columbia Drive Amherst, NH 03031 USA
 Tel: 603-883-3390 Fax: 603-886-3300
 E-mail: sales@monarchinstrument.com
 Website: www.monarchinstrument.com