

## Universal Material Testing Machine

# RTF/RTG Series

### 만능 재료시험기

- 하중측정 정밀도 : 최고의 0.5 등급실험(RTF)
- 하중측정 정밀도 : 1 등급(RTG)
- 뛰어난 내구성 및 정밀도
- 고속 Sampling Rate : 1msec.
- 최대 13채널의 입력신호
- 다양한 동작환경 제공
- 컬러 터치판넬(Optional)
- 다양한 Processing Software 지원



#### 제품사양

Model	RTF Series					RTG Series			
	RTF-2430	RTF-2425	RTF-2410	RTF-2350	RTF-2325	RTG-1310	RTG-1250	RTG-1225	RTG-1210
시험 용량	30ton	25ton	10ton	5ton	2.5ton	1ton	500kg	250kg	100kg
유효 시험폭	590mm					420mm			
크로스헤드 이송거리	1160mm					1100mm			
유효스트로크	625mm					665mm			
속도	0.0005~500mm/min					0.05~1000mm/min			
속도 정밀도	±0.1%					±0.2%			
하중 정밀도	±1% of Reading					±1% of Reading			
Sampling 속도	1msec					1msec			
사이즈	1200×750×2470mm					688×436×1555mm			
무게	1.3ton					100kg			
전원	220V AC, 3 $\psi$ 50/60Hz					220V AC, 1 $\psi$ 50/60Hz			



The color touch panel offers superb visibility and easier operation

## UTM Condition Measurement / Operation Window

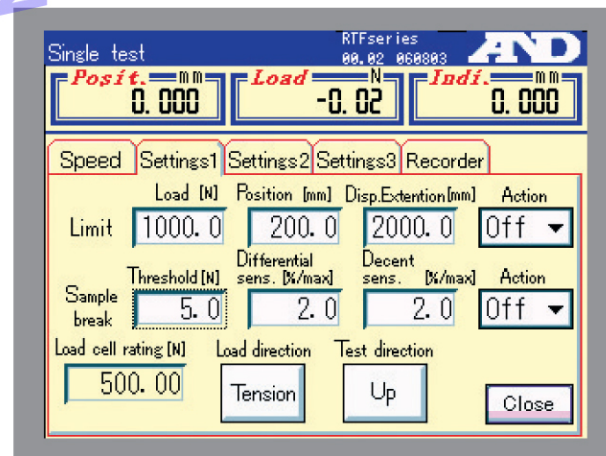
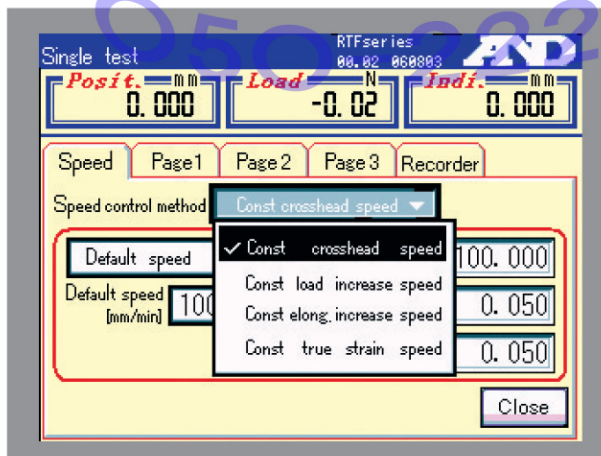
### Touch panel positioning

The sliding touch panel can be easily moved up or down.  
It can also be attached to either pole.



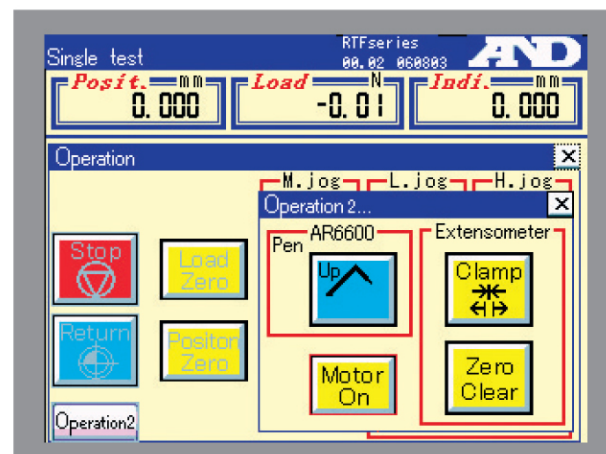
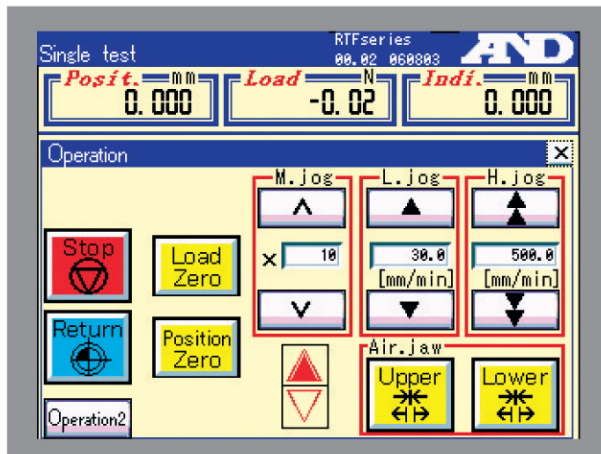
### Condition Measurement

Setting test speed, such as constant crosshead speed and constant load increase speed



### Operation Window

Simple load calibration with the touch of a button



Universal Material Testing Machine

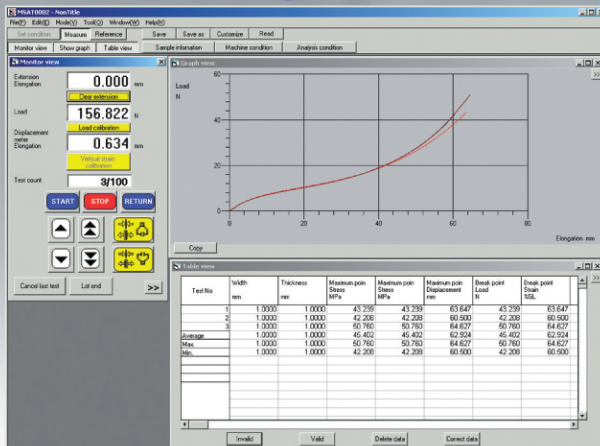


# Multi Signal Analysis Testing MSAT

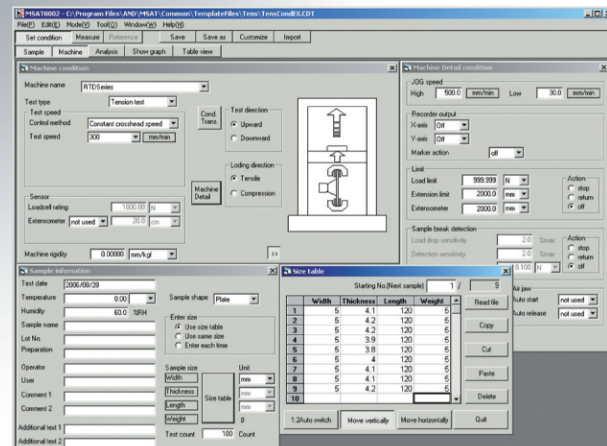
Data processing software for comprehensive control of a testing machine



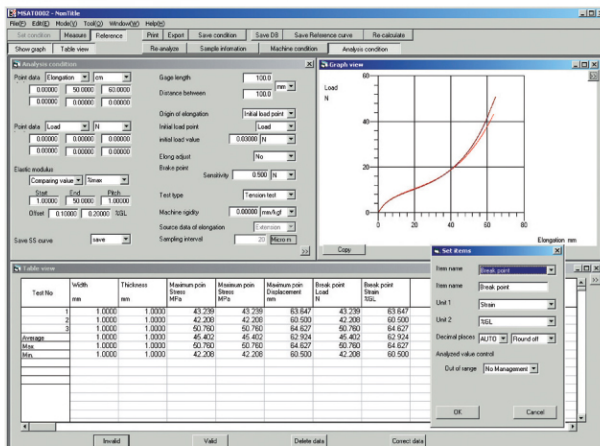
Standard layout setting during a measurement



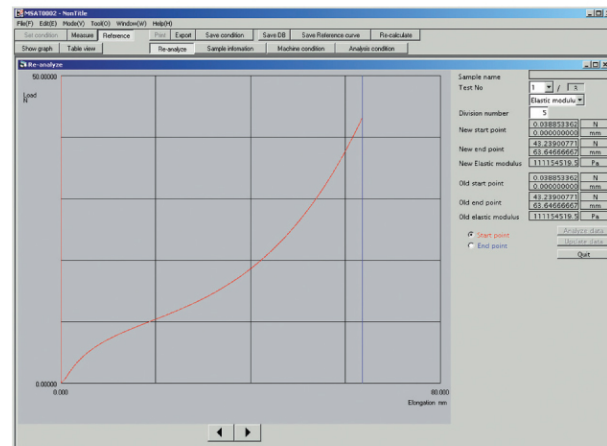
Graph Display Window



Operation Conditions Window



Analysis Condition Window



Reanalysis Window



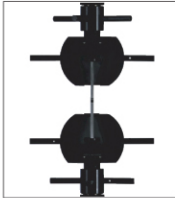
A&D's wide range of applied products for even more advanced applications

## UTM Application

### Applied test jigs for strength measurement

#### Wedge action jaws

Applicable load: 1kN (100gf) – 300kN (30tf)



#### Screw action jaws

Applicable load: 1N (100gf) – 5kN (500kgf)



#### Compression test jig

Applicable load: 25N (2.5kgf) – 300kN (30tf)



#### Compression cage

Applicable load: 50N (5kgf) – 300kN (30tf)



#### Air jaws

Applicable load: 50N (5kgf) – 10kN (1tf)



#### Compression type bending test jig

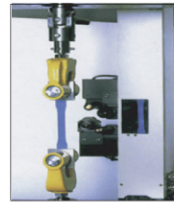
Applicable load: 1kN (100kgf) – 300kN (30tf)



### Applied testing devices for elongation measurement



SG series strain gauge device for measuring distance between gauge marks



Non-contact extensometer between gauge marks

U-4410

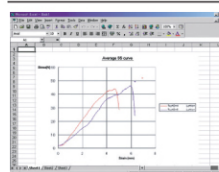
- ▲Strain gauge device for measuring distance between gauge marks (for a plate and a rod)
- ▲Non-contact type extensometer between gauge marks: U-4410
- ▲Contact extensometer between gauge marks: U-4310D

### Applications

#### LOT SET Application

When used with the MSAT0002 / 0003 series, sample information will be automatically saved in a table format with the measurement result after each set of completed tests.

#### Excel PU



When Excel PU is used with the MSAT0002 / 0003 series, it is possible to overwrite the saved averaged S-S curves on an Excel graph to display a comprehensive outline of results.

### Data Recorder



Analog recorder (AR-6600-7)

### Load frame & recorder table



	Dimensions (mm)
For RTG-1310, RTG-1250, RTG-1225 and RTG-1210	680(W)x555(D)x630(H)
For RTF-1350, RTF-1325	897(W)x650(D)x460(H)

Wing (sold separately)

### Applied testing devices for temperature / environment test

- Constant temperature / constant humidity testing devices
- High temperature in gas atmosphere testing devices
- High temperature testing devices
- High temperature in vacuum testing devices
- Ultra-low temperature testing devices
- Dipping testing devices



Constant temperature and constant humidity testing instruments

Model	Temperature range	Remarks
TKC	RT to +270°C	
TLF	-35°C to +270°C	Cooling using refrigerator
TCF	-60°C to +270°C	Cooling using liquid CO <sub>2</sub>
TCLF	-60°C to +270°C	Cooling using refrigerator and liquid CO <sub>2</sub>
TLF <sub>2</sub>	-65°C to +250°C	Two-step refrigerator
TNF	-150°C to +250°C	Cooling Liquid N <sub>2</sub>
TLF · HS	-35°C to +270°C	Cooling using refrigerator with temperature adjustment

