

Model CTCR Series

Shaft Type Rotary Torque Transducer **1 kgf·m ~ 300 kgf·m**

FEATURES

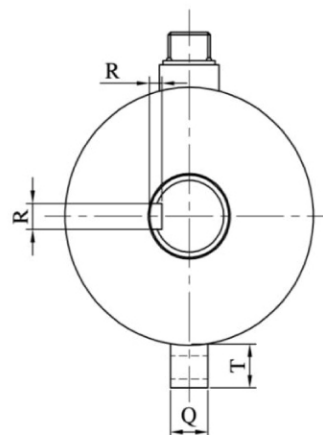
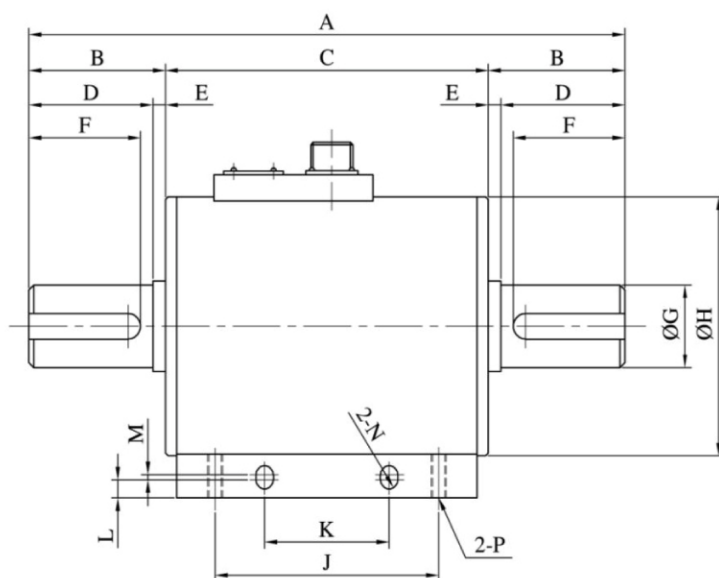
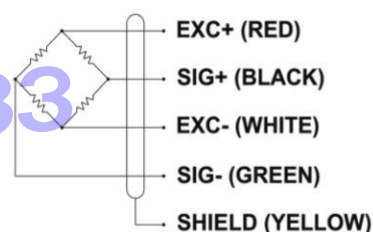
Operating based on the principal of strain gage, CTCR model is available for measuring RPM and torque of continuous rotating object. Application include the performance testers for industrial measurement equipment such as clutch, transmission, motor and pumps.
Possible to manufacture in your order.



SPECIFICATIONS

MODEL	CTCR
Rated capacity (R.C.)	1, 2, 5, 10, 20, 50, 100, 200, 300kgf · m
Rated output (R.O.)	1.5mV/V
Non-linearity	≤ 0.3% R.O.
Hysteresis	≤ 0.3% R.O.
Non-repeatability	≤ 0.3% R.O.
Terminal resistance, input	350Ω ± 1%
Terminal resistance, output	350Ω ± 1%
Insulation resistance	2000MΩ
Temp. effect on rated output	≤ 0.1% LOAD/10°C
Temp. effect on zero balance	≤ 0.1% R.O./10°C
Excitation Voltage	10V DC
Safe overload	150 % R.C.
Cable	Ø7 shield 5m

WIRING INFORMATION



DEMENSIONS-mm

Rated Capacity	A	B	C	D	E	F	ØG	ØH	J	K	L	M	N	P	Q	R	T	R.P.M
1, 2, 5kgf · m	203	43	117	38	5	35	18	85	70	50	7	2	R3.5	M6	15	5x5	17	4500
10, 20kgf · m	240	55	130	50	5	45	32	100	90	50	7	2	R3.5	M6	15	10x8	17	4000
50, 100kgf · m	240	95	150	90	5	85	47	118	100	60	8	2	R4.5	M8	17	12x8	20	3000
200, 300kgf · m	360	106	148	100	6	95	63	131	100	60	8	2	R4.5	M8	17	18x11	20	2900