

# Model CTRF Series

Flange Type Rotary Torque Transducer **5 kgf·m ~ 300 kgf·m**

## FEATURES

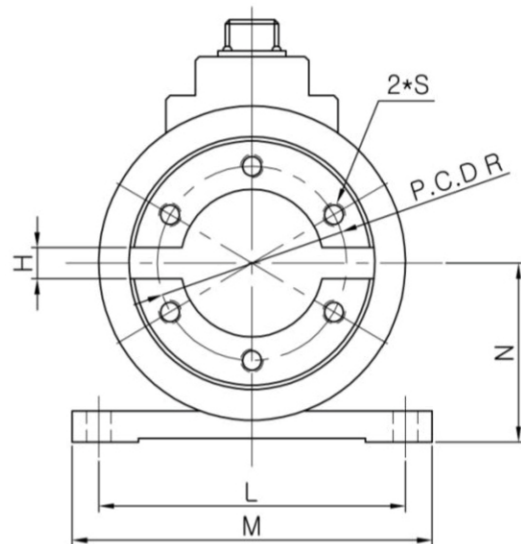
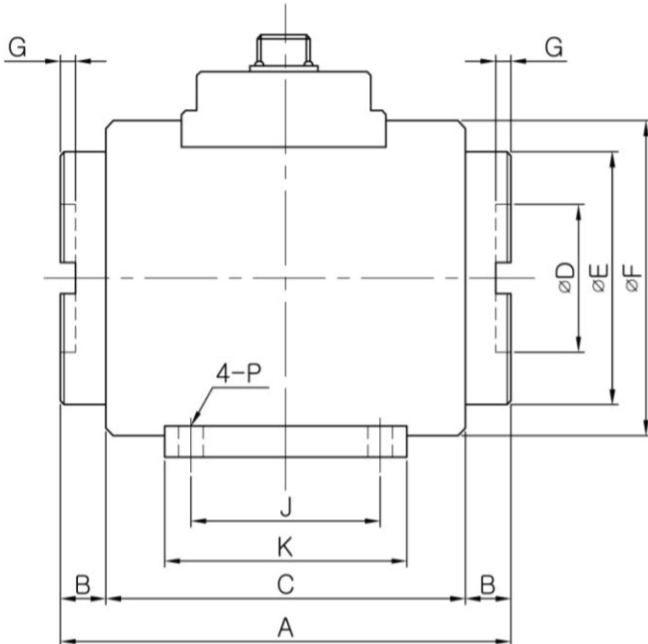
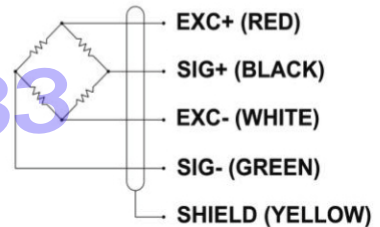
Model CTRF is used to measure torque of auto engine and various motor as rotating torque sensor of flange type.

## SPECIFICATIONS

MODEL	CTCR
Rated capacity (R.C.)	1, 2, 5, 10, 20, 50, 100, 200, 300kgf · m
Rated output (R.O.)	1.5mV/V
Non-linearity	≤ 0.3% R.O.
Hysteresis	≤ 0.3% R.O.
Non-repeatability	≤ 0.3% R.O.
Terminal resistance, input	350Ω ± 1%
Terminal resistance, output	350Ω ± 1%
Insulation resistance	2000MΩ
Temp. effect on rated output	≤ 0.1% LOAD/10°C
Temp. effect on zero balance	≤ 0.1% R.O./10°C
Excitation Voltage	10V DC
Safe overload	150 % R.C.
Cable	Ø7 shield 5m



## WIRING INFORMATION



## DEMENSIONS-mm

Rated Capacity	A	B	C	ØD	ØE	ØF	G	H	J	K	L	M	N	ØP	ØR	S	R.P.M
5, 10, 20kgf · m	119	12	95	38	65	81	4	8	50	64	81	95	46	6.5	50	6-M6 DP15	4500
50kgf · m	125	13	99	40	76	88	4	10	50	64	88	102	49.5	6.5	60	6-M6 DP15	4000
100kgf · m	122	13	96	52	86	100	4	16	50	64	100	118	58	8.5	68	6-M8 DP15	3000
200, 300kgf · m	141	18	105	60	102	116	4	16	50	68	116	134	66	8.5	85	6-M8 DP15	2900