

# Model CTFF Series

Flanged Type Reaction Torque Transducer **10 kgf·cm ~ 50000 kgf·cm**

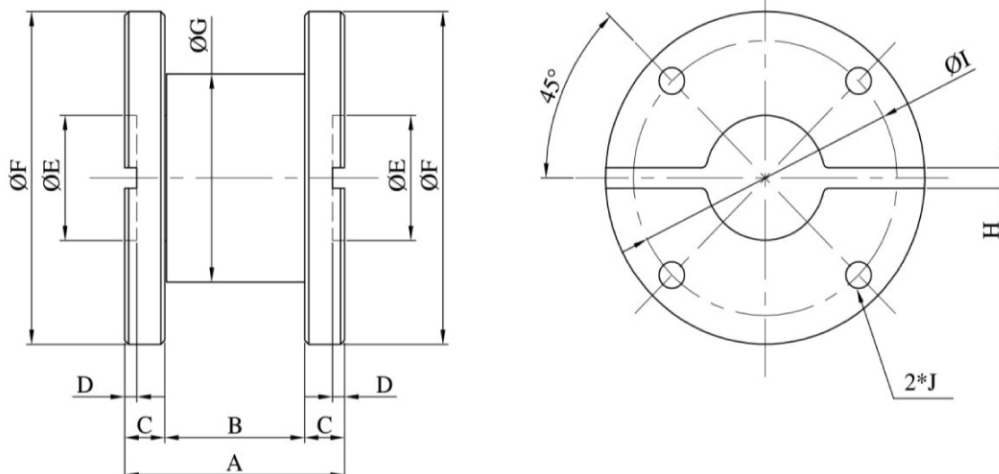
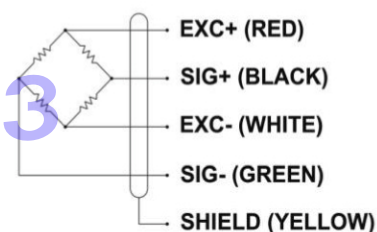
## FEATURES

- A static torque sensor for measurement of torque of stational objects or within a certain angle rotation.
- Suitable for torque measurment of various automobile parts.
- Pneumatic and electric screwdriver etc.
- Small size
- High stability and sensitivity

## SPECIFICATIONS

MODEL	CTRFF
Rated capacity (R.C.)	10, 20, 50, 100, 200, 500, 1000, 2000, 5000, 10000, 20000, 50000 kgf · cm
Rated output (R.O.)	1.5mV/V
Non-linearity	≤ 0.3% R.O.
Hysteresis	≤ 0.3% R.O.
Non-repeatability	≤ 0.3% R.O.
Terminal resistance, input	350Ω ± 1%
Terminal resistance, output	350Ω ± 1%
Insulation resistance	2000MΩ
Temp. effect on rated output	≤ 0.1% LOAD/10°C
Temp. effect on zero balance	≤ 0.1% R.O./10°C
Excitation Voltage	10V DC
Safe overload	150% R.C.
Cable	Ø7 shield 5m

## WIRING INFORMATION



## DEMENSIONS-mm

Rated Capacity	A	B	C	D	ØE	ØF	ØG	H	ØI	J
10, 20, 50kgf · cm	55	35	10	3	30	80	50	5	66	4-Ø6.5
100, 200kgf · cm	55	35	10	3	30	80	50	5	66	4-Ø6.5
500, 1000kgf · cm	55	35	10	3	30	80	50	5	66	4-Ø6.5
2000kgf · cm	80	50	15	5	40	98	50	10	78	6-Ø10.5
5000kgf · cm	120	80	20	5	60	118	70	12	95	6-Ø10.5
10000kgf · cm	130	90	20	6	60	146	75	16	115	6-Ø14
20000kgf · cm	140	90	25	7.5	60	166	88	20	130	6-Ø18
50000kgf · cm	170	100	35	10	80	197	98	28	155	6-Ø20