

Model CTSS Series

Shaft Type Reaction Torque Transducer **10 kgf·cm ~ 10000 kgf·cm**

FEATURES

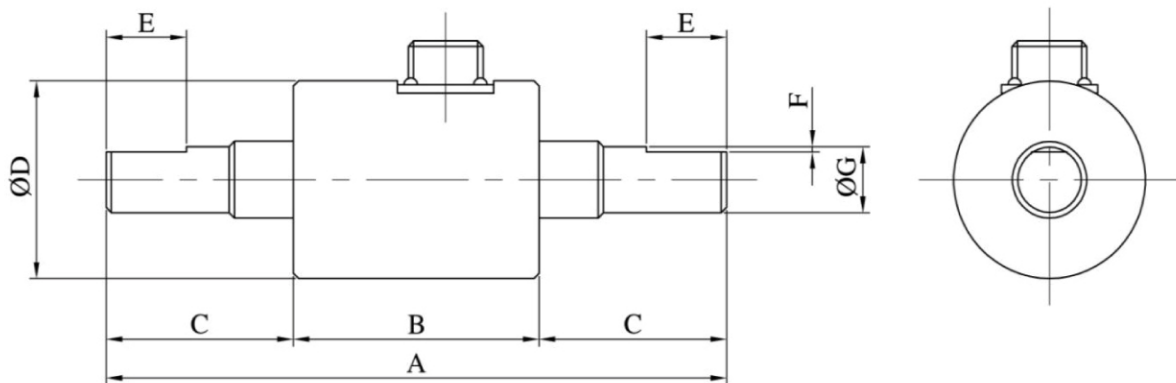
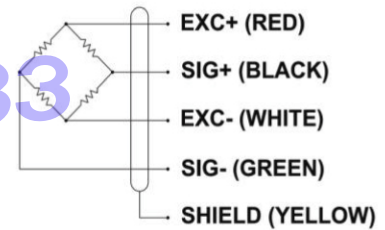
CTSS models as shaft torque transducer have the same features as the model CTFF.
The applications are suitable for adjusting torque at shut-off couplings, measuring of steering devices and checking electric and pneumatic motors.



SPECIFICATIONS

MODEL	CTCR
Rated capacity (R.C.)	10, 20, 50, 100, 200, 500, 1000, 2000, 5000, 10000 kgf · cm
Rated output (R.O.)	1.5mV/V
Non-linearity	≤ 0.3% R.O.
Hysteresis	≤ 0.3% R.O.
Non-repeatability	≤ 0.3% R.O.
Terminal resistance, input	350Ω ± 1%
Terminal resistance, output	350Ω ± 1%
Insulation resistance	2000MΩ
Temp. effect on rated output	≤ 0.05% LOAD/10°C
Temp. effect on zero balance	≤ 0.05% R.O./10°C
Excitation Voltage	10V DC
Safe overload	150% R.C.
Cable	Ø7 shield 5m

WIRING INFORMATION



DEMENSIONS-mm

Rated Capacity	A	B	C	ØD	E	F	ØG
10, 20, 50kgf · cm	86	46	35	36	15	1	12
100 kgf · cm	86	46	35	38	15	6x6	18
200, 500 kgf · cm	89	51	35	48	15	8x7	24
1000, 2000 kgf · cm	110	58	45	58	22	10x8	32
5000, 10000 kgf · cm	145	60	60	82	30	16x10	58