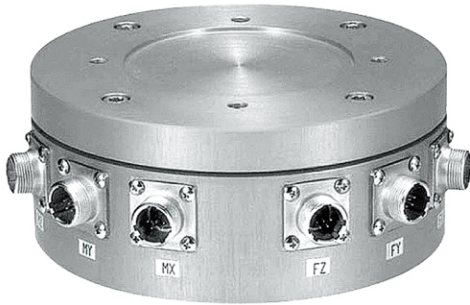


CMAS

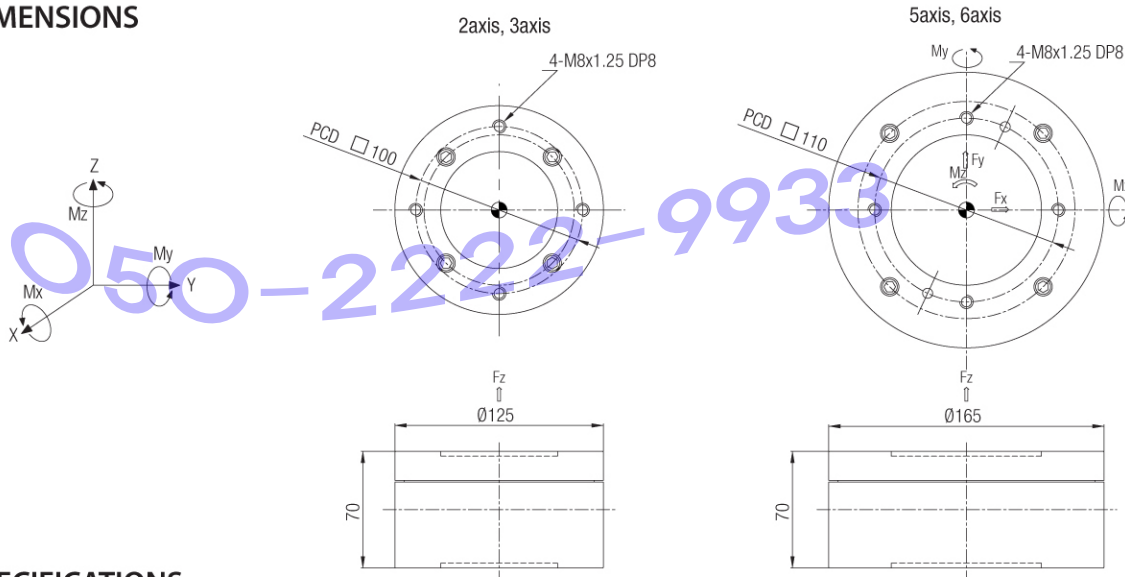
Multi - axis load cell(2, 3, 4, 5, 6 axis) **2, 5, 10, 20, 50 kgf / kgf.cm**



FEATURES

- various capacity of detecting up 6 components
- minimise interaction between components
- Protection class IP65
- high accuracy less than 0.5% on each components
- all products patent pending
- order made (capacity, size)

DIMENSIONS



SPECIFICATIONS

Max. Capacity	kgf / kgf.cm	2, 5, 10, 20, 50
Rated output	mV/V	0.5 (approx)
Zero balance	mV/V	0 ± 0.1
Accuracy class		
Combined error	%RO	0.5
Repeatability	%RO	0.1
Creep(30min.)	%RO	0.05
Temperature effec on		interference error : $\pm 3\%FS$
Zero value	%RO/10°C	0.1
Output value	%RO/10°C	0.6
Excitation		
Recommended	V	10
Maximum	V	15
Resistance		
Input	Ω	$400 \pm 50 / 800 \pm 50$
Output	Ω	$350 \pm 3.5 / 700 \pm 7$
Insulation	M Ω	$>2,000@50V DC$
Compensated temp. range	°C	-10 ~ +40
Operating temp. range	°C	-20 ~ +70