

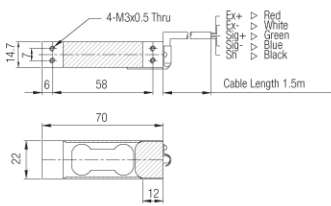
CBCL

Single point load cell **600gf, 1, 2, 3, 6, 10, 15, 20, 30, 60, 100 kgf**

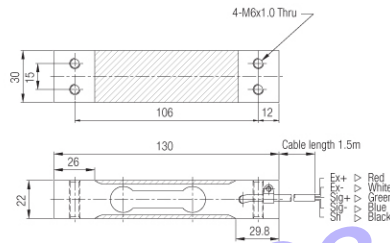


DIMENSIONS

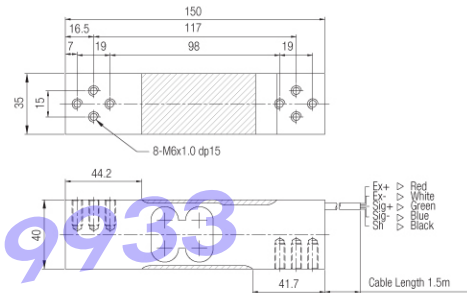
600G ~ 3L



6L ~ 30L



60L~100L



FEATURES

- Low cost
- Off center compensated
- Protection class IP65

Mounting

Capacity	Socket-head cap screw	Tightening torque	Max. platform size
600gf~3kgf	M3 x 0.5(10.9)	1.5Nm	200 x 200 mm
6kgf~30kgf	M6 x 1.0(10.9)	14Nm	300 x 300 mm
60kgf~100kgf	M6 x 1.0(10.9)	14Nm	400 x 400 mm

Material

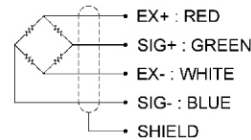
Anodized Aluminum

Cable

Braided shield 4-wire round cable with PVC-jacket

Ordering Information

CBCL-xxxL(G)
Capacity in kg(g)



SPECIFICATIONS

Max. Capacity	kgf	600gf, 1, 2, 3	6 ~ 100
Rated output	mV/V	1.0 ± 0.1	2.0 ± 0.2
Zero balance	mV/V	0 ± 0.1	0 ± 0.1
Combined error	%RO		0.03
Repeatability	%RO		0.01
Creep(30min.)	%RO		0.03
Temperature effec on			
Zero value	%RO/10°C		0.028
Output value	%RO/10°C		0.014
Excitation			
Recommended	V		10
Maximum	V		15
Resistance			
Input	Ω		400 ± 20
Output	Ω		350 ± 3.5
Insulation	MΩ		>2,000@50V DC
Compensated temp. range	°C		-10 ~ +40
Operating temp. range	°C		-20 ~ +80